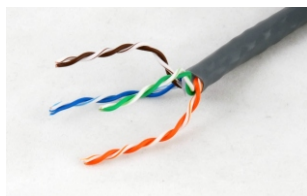


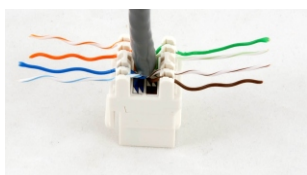
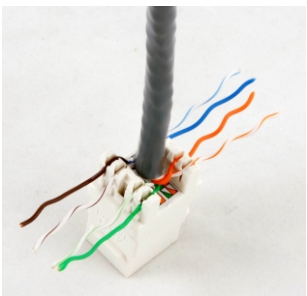
Remove about 40 mm
of the plastic sheath



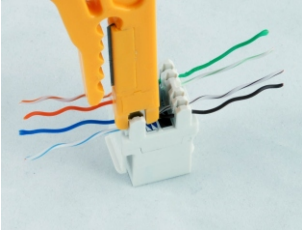
Remove the plastic cover
of the LSA-contacts



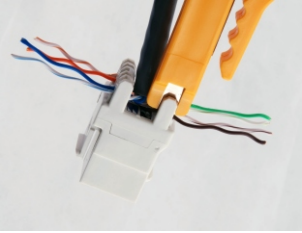
Prepare the cable
before the insertion



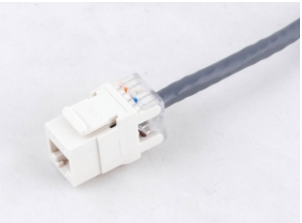
Insert the pairs of the cable into
the plastic housing (on the top of
the LSA-contacts) according EIA/
TIA 568 A or B
(pictured on the Keystone Jack)



Use the insertion tool (partnr. 39931.1)
to punch down the wires into the
LSA-contacts



Use an appropriate wire cutter to cut
off the excess length of the wires



Fit the plastic cover
on the Keystone Jack

