

FOS-3148 Management Gigabit Ethernet Switch



44 ports 100/1000Mbps SFP + 4 Combo port
10/100/1000Mbps RJ-45 + 100/1000Mbps SFP slot
Managed Ethernet Access Switch.



Features

- **IPv4/IPv6 dual stack**
Support IPv6 management, packet forwarding and MLD v1/v2 Snooping.
- **SFF-8472 Diagnostic Monitor Interface**
Allow administrator to view SFP information and status including speed, distance, vendor ID, vendor S/N, temperature, voltage, TX bias, etc.
- **Rich in functions to facilitate multimedia streaming**
Support IGMP snooping, IGMP fast leave, IGMP filtering & advanced MVR** to intelligently transmit multicast traffic and deliver IPTV service.
- **Q-in-Q VLAN Tagging**
Allows service providers to implement Metro Ethernet service while maintaining the layer-2 separation of different customers.
- **IEEE 802.3ad Link Aggregation**
A cost-efficient way to increase bandwidth and reliability by grouping multiple links into one.
- **Unique Power Down Trap technology**
Built-in CTS unique SNMP power down trap function can rapidly detect network fault caused by power outage.
- **Power supply redundancy**
By combining two power sources (2AC or 2DC or 1AC+1DC), power redundancy can be well achieved.

Target Applications

- FTTX Metro Ethernet implementations.

**Coming Soon.

Description

Connection Technology Systems (CTS) FOS-3148 is a layer2+ gigabit access switch equipped with 44 dual-speed SFP slots and 4 combo uplink ports (10/100/1000Mbps RJ-45 + 100/1000Mbps SFP slots). All SFP slots can accommodate wide range of SFP transceivers including single-mode, WDM or CWDM transceivers. FOS-3148 is perfect for service providers and enterprises who plan to implement FTTX or Metro Ethernet networks, with further spanning into triple-play service.

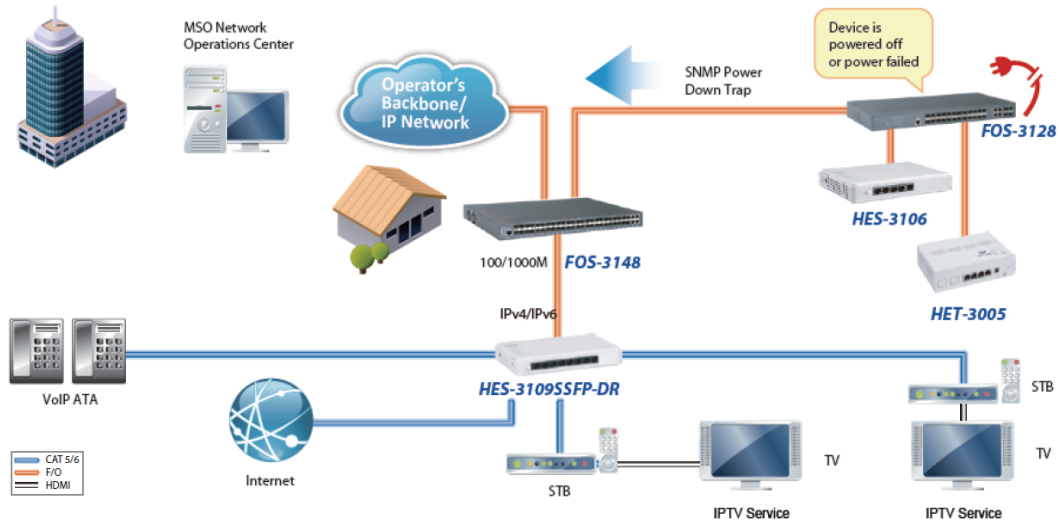
FOS-3148 delivers wire-speed throughput for data, voice and IPTV services, using non-blocking 96Gbps switching fabric. 1+1 power supply design can provide seamless power changeover to reach sustainability of power if one of power supply has failure. AC and DC powers can be mixed in the same unit for deployment flexibility.

Many service providers are extending their existing data service with triple-play service because it can generate higher revenue return by combining data, voice and IPTV in one box. Advanced features including MVR**, IGMP snooping, IGMP fast leave, IGMP filtering, various QoS classifications and rate limit control facilitate service providers to deploy a manageable network environment and deliver a successful triple-play service.

In order to provide customers extra security and separation, FOS-3148 has come with QinQ feature. This feature enables service providers to separate different customers at layer2 level no matter what VLAN setting the end customer has.

With carrier-grade in mind while keeping user-friendly for administrators, FOS-3148 can be easily managed by web interface, console, telnet CLI, SNMP and DHCP auto-provision.

Application Diagram



Specification

Interfaces

- Uplink Port (Type):
4 x 100/1000Mbps Combo (SFP + RJ-45)
- LAN Port (Type):
44 x 100/1000Mbps (SFP)
- Console Port (Type):
1 x RS-232 Port (RJ-45)

Standards

- IEEE802.3 10Base-T
- IEEE802.3u 100Base-TX/FX
- IEEE802.3ab 1000Base-T
- IEEE802.3z 1000Base-X
- IEEE802.3az EEE
- IEEE802.3x Flow Control
- IEEE802.3ad Link Aggregation (LACP)
- IEEE802.1ab LLDP
- IEEE802.1p Priority
- IEEE802.1q Tag VLAN
- IEEE802.1d STP
- IEEE802.1w RSTP
- IEEE802.1X Port Based Network Access Control

LEDs

Power A/B, COM, Status, Speed/Link/Act

H/W Specification

MAC Address Table: 16K
 Non-Blocking Switching Fabric: 96Gbps
 Memory Buffer: 1536K Bytes
 VLAN Groups: 2K VLAN Groups
 Priority Queues: 8 Queues
 Jumbo Frame: 9K Bytes
 Store and Forward Switching Mechanism
 Auto-Cross Over for MDI/MDIX in TP Ports
 Auto-Negotiation in TP Ports
 Full/Half Duplex Mode Operation

Forward / Filter Rate

- 10M: 14,880/14,880pps
- 100M: 148,800/148,800pps
- 1000M: 1,488,000/1,488,000pps

Features

- Broadcast Storm Control
- Unknown Unicast/Multicast Flood Control
- IEEE 802.1p with 8 Hardware Priority Queues
- IEEE 802.1Q Tag-Based and Port-Based VLAN
- Q-in-Q
- Weighted Round-Robin (WRR)/Strict-Priority Queuing (SPQ) Scheduling Algorithm
- Policy Based Rate Limiting
- Port Based Traffic Shaping
- Static Multicasting
- IGMP v1/v2/v3 Snooping
- IGMP Fast Leave
- IGMP Filtering via Filtering Profile
- MLD v1/v2 Snooping
- Multicast Channel Limitations per Port
- Multicast VLAN Registration (MVR) **
- IEEE 802.3ad Link Aggregation (LACP)
- Static port Trunking
- Up to 16 Aggregation Groups, 8 Ports per Group
- Spanning Tree Protocol (STP) / Rapid Spanning Tree Protocol (RSTP)
- Layer Link Discovery Protocol (LLDP)
- SFP-8472 (Digital Diagnostic Management Interface for SFP)
- IEEE 802.1X Authentication
- RADIUS Authentication for 802.1X
- DHCP Relay Agent with Option 82
- IP Source Guard (Static IP, DHCP Snooping)
- DHCP Server Trust Port
- Loop Detection
- Port Isolation
- Port Mirroring
- ACL Based on Physical port, IEEE802.1p, VID, TOS/DSCP, Ethertype, Protocol Type and L4 Port

- Wire Speed Rate Limiting per MAC/IP/TCP/UDP
- IPv6 over Ethernet (RFC 2464)
- IPv6 Addressing Architecture (RFC 4291)
- IPv6 Dual Stack (RFC4213)
- ICMPv6 (RFC4884)
- Path MTU Discovery for IPv6 (RFC 1981)
- Neighbor Discovery (RFC4861)
- DHCPv6 Client
- SNTP, Daylight Saving
- DHCP Client and Auto-Provision
- Text Based Configuration
- FTP, TFTP, HTTP Firmware & Configuration Upgrade
- Web, SNMP, SSHv2 and Telnet Console CLI Management
- RADIUS Client for Web, CLI
- SNMP v1/v2c - Private, RFC-1213, RMON MIBs
- Event Log, Syslog
- Dying Gasp (SNMP Power Down Trap)

Power Requirement

- Input AC : 100VAC-240VAC
- Input DC : 48VDC
- Power Consumption : 55W

Environmental Condition

- Operation: 0°C ~ 50°C
- Storage: -20°C ~ 60°C
- Humidity: 5% ~ 90%, Non-condensing

Dimension & Weight

- Size: 440 x 290 x 44 mm (WxDxH)
- Weight: 6.0 Kg

EMC/Safety

- FCC Class A, CE

Order Information

FOS-3148

| MODEL | FIBER PORT | | | | | TP PORT | | SUPPORT POWER SOURCE |
|-------------------|--------------|------|-----------|----------|-------|-----------------|-------|---|
| | Speed | Type | Connector | Distance | Ports | Speed | Ports | Power Type |
| FOS-3148-1A | 100/1000Mbps | SFP | - | - | 48 | 10/100/1000Mbps | 4 | Fixed 1 internal AC |
| FOS-3148-2A | 100/1000Mbps | SFP | - | - | 48 | 10/100/1000Mbps | 4 | Fixed 2 internal AC |
| FOS-3148-1D | 100/1000Mbps | SFP | - | - | 48 | 10/100/1000Mbps | 4 | Fixed 1 internal DC |
| FOS-3148-2D | 100/1000Mbps | SFP | - | - | 48 | 10/100/1000Mbps | 4 | Fixed 2 internal DC |
| FOS-3148-1AD | 100/1000Mbps | SFP | - | - | 48 | 10/100/1000Mbps | 4 | Fixed 1 internal AC and 1 internal DC |
| FOS-3148-BAT-1A | 100/1000Mbps | SFP | - | - | 48 | 10/100/1000Mbps | 4 | Fixed 1 internal AC and 1 Battery Charging Unit |
| FOS-3148-BAT-P-1A | 100/1000Mbps | SFP | - | - | 48 | 10/100/1000Mbps | 4 | Fixed 1 internal AC /w AC Protector and 1 Battery Charging Unit |

SFP-30

| MODEL | COPPER PORT | | | | | Temperature |
|----------|-------------|------|-----------|----------|--|-------------|
| | Speed | Type | Connector | Distance | | |
| SFP-30TP | 1000Mbps | - | RJ-45 | 100M | | 0°C to 70°C |

SFP-31

| MODEL | FIBER PORT | | | | | |
|-------------------------------------|------------|------|-----------|--------------------------|--|-------------|
| | Speed | Type | Connector | Distance | Wavelength | Temperature |
| SFP-31FC | 1000Mbps | MM | LC | 550M | 850nm | 0°C to 70°C |
| SFP-31FC(SM-10/20/40/50/80/100/120) | 1000Mbps | SM | LC | 10/20/40/50/80/100/120KM | 1310nm/1310nm/1310nm/1550nm/1550nm/1550nm/1550nm | 0°C to 70°C |
| SFP-31W2A(SM-10/20/40/80) | 1000Mbps | WDM | LC | 10/20/40/80KM | TX:1310nm/1310nm/1310nm/1510nm RX:1550nm/1550nm/1550nm/1570nm | 0°C to 70°C |
| SFP-31W2B(SM-10/20/40/80) | 1000Mbps | WDM | LC | 10/20/40/80KM | TX:1550nm/1550nm/1550nm/1570nm RX:1310nm/1310nm/1310nm/1510nm | 0°C to 70°C |
| SFP-31FC-C11 | 1000Mbps | CWDM | LC | 80KM | 1470nm | 0°C to 70°C |
| SFP-31FC-C12 | 1000Mbps | CWDM | LC | 80KM | 1490nm | 0°C to 70°C |
| SFP-31FC-C13 | 1000Mbps | CWDM | LC | 80KM | 1510nm | 0°C to 70°C |
| SFP-31FC-C14 | 1000Mbps | CWDM | LC | 80KM | 1530nm | 0°C to 70°C |
| SFP-31FC-C15 | 1000Mbps | CWDM | LC | 80KM | 1550nm | 0°C to 70°C |
| SFP-31FC-C16 | 1000Mbps | CWDM | LC | 80KM | 1570nm | 0°C to 70°C |
| SFP-31FC-C17 | 1000Mbps | CWDM | LC | 80KM | 1590nm | 0°C to 70°C |
| SFP-31FC-C18 | 1000Mbps | CWDM | LC | 80KM | 1610nm | 0°C to 70°C |

SFP-31-DR

| MODEL | FIBER PORT | | | | | |
|---------------------|--------------|------|-----------|----------|---------------------|-------------|
| | Speed | Type | Connector | Distance | Wavelength | Temperature |
| SFP-31FC-DR | 100/1000Mbps | MM | LC | 2KM/550M | 1310nm | 0°C to 70°C |
| SFP-31FC(SM-10)-DR | 100/1000Mbps | SM | LC | 10KM | 1310nm | 0°C to 70°C |
| SFP-31W2A(SM-10)-DR | 100/1000Mbps | WDM | LC | 10KM | TX:1310nm RX:1550nm | 0°C to 70°C |
| SFP-31W2B(SM-10)-DR | 100/1000Mbps | WDM | LC | 10KM | TX:1550nm RX:1310nm | 0°C to 70°C |