



GTL-2891 Version: 1

## 28-Port Stackable L3 Managed Gigabit Switch, 2 x 10-Gigabit SFP+, 1 x 10-Gigabit Module Slot

The GTL-2891 are a family of high-performance Gigabit Ethernet Layer 3 switches featuring 28 ports; with 24 10/100/1000BASE-T ports, 2 10G SFP+ ports, and one 10G dual port expansion slot. The switches are ideal for high-performance server aggregations, such as enterprise data centers, where they can connect high-end or network-attached files servers over fiber ports. They can also be deployed as a backbone upgrade, or to provide Gigabit-to-the-desktop for power users. These switches are packed with features and are a cost-effective solution that bring continuous availability, enhanced security, and advanced QoS to the network edge, while maintaining simplicity of management.

### Key-features

- Dynamic ARP Inspection (DAI) protects switches against ARP spoofing
- Stacking up to 8 switches in one stack
- Support Operations, Administration, and Maintenance (OAM) mechanisms
- Ethernet Ring Protection Switching (ERPS) for Ethernet ring topologies with sub-50 ms failover capabilities
- IEEE-802.1d/w Spanning Tree Protocol (STP) und Port-Spiegelung
- IEEE-802.3ad LACP für Auto-Port-Aggregation
- unterstützen Port-basiertes VLAN, IEEE 802.1Q-VLAN-Tagging
- QoS-Steuerung zur Traffic- und Bandbreitenverwaltung

### Specifications

#### System Specifications

##### Standards & Protocols:

- ?IEEE 802.1p Quality of Service (QoS)
- ?IEEE 802.1x port authentication
- ?IEEE 802.3x Ethernet frame start and stop requests and timers used for flow control on full-duplex links
- ?IEEE 802.3u CSMA/CD access method and physical layer specifications for 100 BASE-TX Fast Ethernet
- ?IEEE 802.3z CSMA/CD access method and physical layer specifications for 1000 BASE Gigabit Ethernet
- ?IEEE 802.1q Virtual LAN
- ?IEEE 802.1d Spanning Tree Protocol
- ?IEEE 802.3ad Link Aggregation Control Protocol (LACP)
- ?IEEE 802.1s Rapid Spanning Tree Protocol
- ?IEEE 802.1w Multiple Spanning Tree Protocol

**Memory:**

?Flash Memory : 128 MB

?DRAM : 256 MB

**Pufferspeicher:**

1.5 MB

**Connectors and Cabling:**

24 x 10/100/1000 Base-T & 2 x 10G SFP+ & 1 Slots for 2 x 10G Stacking /Uplink

?Fiber cable : 50/125µm, 62.5/125µm

**Indikator:**

LED indicators : Port, Uplink, System, Diagnostic

**Transmission Method:**

Store and Forward

**Power Input:**

AC Input : 100 to 240 V, 50-60 Hz, 1.5 A

**Power Consumption:**

35 W

## Features

**General:**

OAM :

?IEEE 802.3ah Link

?IEEE 802.1ag Connectivity Fault Management (CFM)

?ITU-T Y.1731 performance and throughput management

Stacking Features :

?IP Clustering up to 36 devices, bandwidth up to 20G

?Hardware Stacking up to 8 units, bandwidth up to 20G

Quality of Service(QoS):

?Traffic Classification based on IEEE 802.1p CoS, IP Precedence, IP DSCP

?Traffic Scheduling based on Strict Priority, Weighted Round Robin, Strict + WRR traffic scheduling

IGMP Snooping

MVR (Multicast VLAN Registration)

QinQ/Selective QinQ

G.8032 (ERPSv1/v2)

IPv4/IPv6 dual protocol stack

**Security:**

?Port security

?802.1x

?Access Control List

?DHCP snooping

?IP Source Guard

?Dynamic ARP Inspection

?DoS Protection

?AAA

?SSH v1.5/v2

?SSL/HTTPS

?Management access filter

?PPPoE Intermediate Agent

## Management:

- ?CLI/WEB Based
- ?Telnet/SNMP v1/v2/v3
- ?RMON I (1,2,3, 9 group)
- ?Software Download
- ?Auto upgrade
- ?Dual Image
- ?BOOTP/DHCP
- ?SNTP
- ?DNS
- ?IP clustering
- ?Even/Error/System log
- ?Port monitor MAC/VLAN
- ?LLDP (802.1ab)
- ?sFlow
- ?Delay reload

## L3:

- ?Multi-netting (CIDR)
- ?IP v4/v6 Unicast Routing :
  - ex. Static Route , ECMP , RIP v1/v2
  - & RIPng , OSPF v2/v3 , BGPv4+
- ?IP v4/v6 Multicast Routing :
  - ex. PIM-DM/SM, PIM-DM6/SM6
- ?VRRP
- ?MLD v1/v2
- ?ARP/Proxy ARP
- ?IGMP/IGMP proxy v1/v2/v3

## Ease of Use:

Yes

## Performance

### Backplane (Gbps):

Switching Bandwidth : 128 Gbps  
Forwarding Performance : 95.23 Mpps

### MAC-Adresstabelle:

16K

### Datenrate:

GE:Resolution 64 Kbps ~ 1000 Mbps  
10G:Resolution 64 Kbps~ 10000 Mbps

### Weiterleitungsrate:

95.24Mpps

### Jumbo-Frames:

10K

## Environment

### Energieeffizienz:

Yes

### Acoustic Noise:

No test report

### Heat Dissipation:

Fanless



**Temperatur (°C):**

Operating : 0oC to 45oC

Storage : -40oC to 70oC

**Luftfeuchtigkeit (nicht kondensierend ):**

Operating/Storage : 10% to 90%

**Physical Specifications**

**Abmessungen (W x D x H mm):**

44 x 31.5 x 4.4 cm

**Gewicht:**

3.7 Kg

**Zuverlässigkeit**

**MTBF:**

904,213 hr (25oC)

**Approval and Compliance**

**Zertifizierung:**

certification : FCC , CE , VCCI Class A

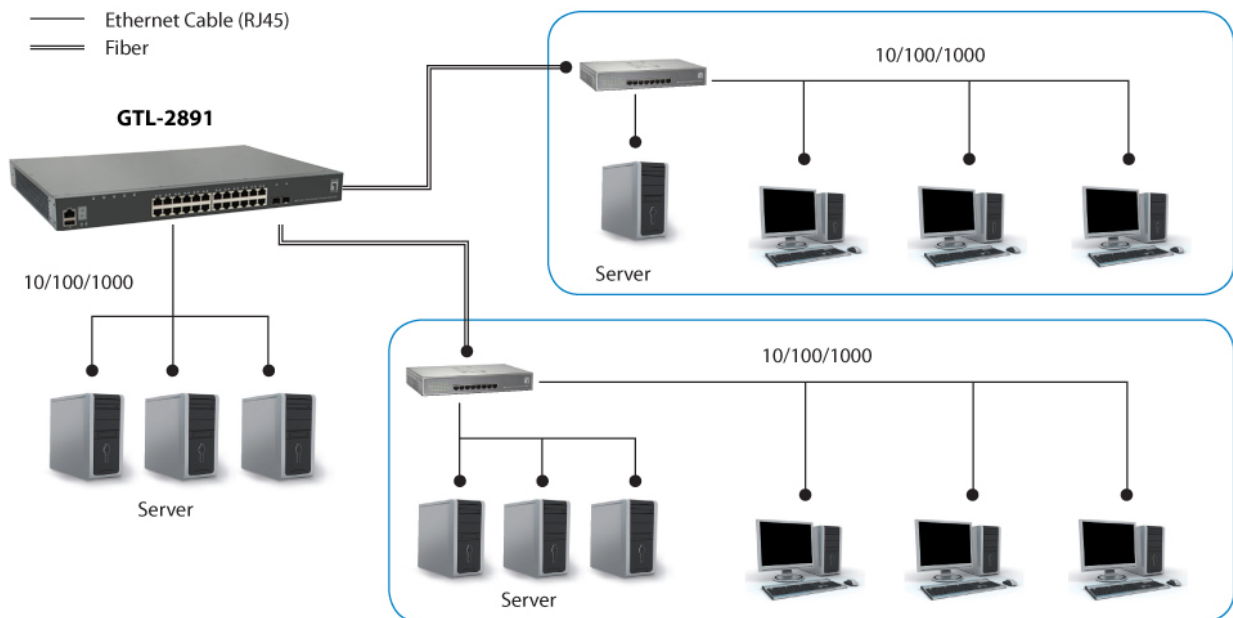
**Safety:**

Certification : CB , UL

**Gehäuse:**

Environmental Regulation compliance : WEEE , RoHS

**Diagramm**



**Order Information**

GTL-2891

## Package Contents

GTL-2891  
Stromkabel  
19" Einbaurahmen  
GummifüÙe  
Quick Installation Guide  
Ressource CD (Bedienungsanleitung, QIG)  
Konsolenkabel

---

## Zubehöör



**MDU-0211**  
2-Port 10G SFP+ Module

No liability or responsibility for any errors or omissions in the content.  
Specifications are subject to change without notice.  
All mentioned brand names are registered trademarks and property of their owners.  
Copyright © Digital Data Communications GmbH, Germany. All Rights Reserved.