

Vertical Cable Management Panel for side-mounting in 42U network and server cabinets

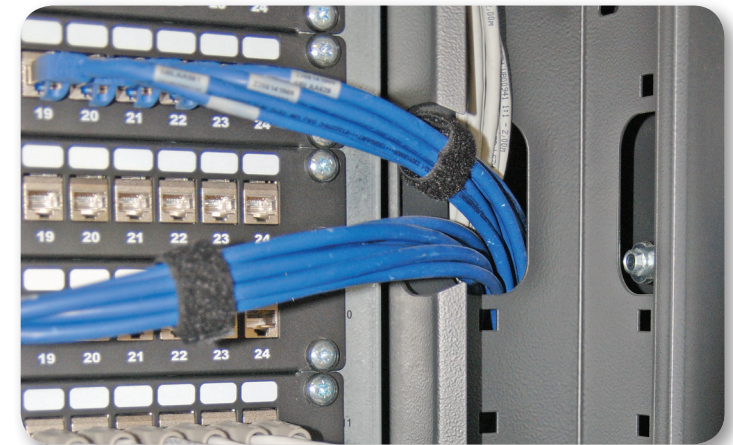


- Designed for maintaining, organizing and concealing copper and fiber optic cables in 42U network and server cabinets
- Mounting on left and right side
- Material: steel sheet 1.5 mm
- Dimensions (H x W x D): 1830 x 98 x 98 mm
- Usable height: 40U
- Paint finish: RAL7035 light grey / RAL9005 deep black
- Delivery consists of 2 panels
- **Necessary set of 4 horizontal traverses for mounting see accessories**

Art.-No.	Type	Colour
699994	Without Cover	RAL7035, light grey
699994.1	With Cover	RAL7035, light grey
699994TS	Without Cover	RAL9005, deep black
699994TS.1	With Cover	RAL9005, deep black

Accessories

Art.-No.	Accessories
699994TS600	Set of traverses (4 pcs.) for cabinet depth 600 mm
699994TS800	Set of traverses (4 pcs.) for cabinet depth 800 mm
699994TS1000	Set of traverses (4 pcs.) for cabinet depth 1000 mm
699994TS1200	Set of traverses (4 pcs.) for cabinet depth 1200 mm



orderly and clear cable routing



screw-mounting sidely at the traverses (see accessories)

RoHS
compliant

Created MN	Date 04.04.10	Vertical Cable Management for side-mounting 699994xx.x	File: 699994xx.x_ENG
Last rev. MN	Date 07.05.13		