

# 16-Port 10/100 Rackmount Switch



FSW-1650

H/W Version: 4

## Product Overview

The FSW-1650 switch provides an ideal solution for small businesses that demand a reliable network switch that provides a high bandwidth interface between file servers and workgroups, departments and offices.

## Advanced Networking Features

The LevelOne FSW-1650 is a wire-speed, non-blocking 16 port Fast Ethernet Unmanaged Switch with an internal power supply. It provides a network with an 8K MAC address table, 3.2Gbps backplane throughput, asymmetrical flow-control support for full-duplex network connectivity, auto-negotiation and Auto-MDIX.

The 16-port Fast Ethernet Switch utilizes packet-store-and forwarding switching for error-free data transmissions and IEEE802.3x backpressure flow

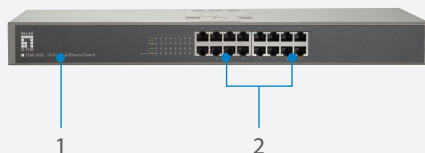
control to control data flow between the sending and receiving nodes as well as to prevent any data packet loss.

## Compact Design

The FSW-1650 is a compact designed network switch. Users can place the switch on any desktop area or mount it in a 19-inch server rack or cabinet by using the included rack-mounting accessory kit.

## Quick Configuration and Easy Maintenance

The LevelOne FSW-1650 does not require any software configuration. It is Plug-and-Play enabled for quick set-up and immediate use within the Local Area Network. The 16 port Faster Ethernet Switch is equipped with a full range of LEDs for instant error detection, networking monitoring and network troubleshooting.



1. LEDs
2. 10/100Mbps Ports
3. Internal Power Socket

## Key Features

- 16 10/100Mbps NWay ports
- Fully compliant with IEEE 802.3az standard
- Supports 8K MAC address table
- Supports 3.2Gbps backplane throughput
- Supports IEEE 802.1P QoS (WRR 8:1)
- Accessory kit for mounting into a 19-inch server rack
- Supports back-pressure and flow control
- Store-and-forward architecture
- Internal power supply

## Related Products



**FSW-0511**  
5-Port Fast Ethernet Switch



**FNC-0109TX**  
10/100 Mbps Ethernet Card

## Technical Specifications

### Network Interface

#### Standards

IEEE 802.3 10Base-T Ethernet  
 IEEE 802.3u 100Base-TX Fast Ethernet  
 IEEE 802.3x Flow Control and Back Pressure  
 IEEE 802.1P Quality of service  
 IEEE802.3az Energy Efficient Ethernet

#### Network Interface

16x 10/100 Mbps RJ-45 ports

#### Network Cables

10Base-T: 2-pair UTP/STP Cat.3/4/5, Up to 100 m  
 100Base-TX: 2-pair UTP/STP Cat. 5, Up to 100 m

#### Data Transfer Rate

Ethernet: 10Mbps (Half-duplex)  
 Ethernet: 20Mbps (Full-duplex)  
 Fast Ethernet: 100Mbps (Half-duplex)  
 Fast Ethernet: 200Mbps (Full-duplex)

#### Switching Protocol

CSMA/CD

#### Switch Architecture

Store-and-Forward

#### Backplane Throughput

3.2Gbps

#### MAC Address Table

8K entries with Auto learning function

#### Memory

Packet Buffer: 160Kbytes

#### Status Indicators

Link/ Act LED  
 Power LED  
 100Mbps LED

### Physical Specifications

#### Internal Power Supply

100 ~ 240V AC, 50/60Hz

#### Power Consumption

6.2 Watts

#### Temperature

Operating: 0°C ~ 40°C  
 Storage: -40°C ~ 70°C

#### Humidity

Operating: 10% ~ 90% (Non-condensing)  
 Storage: 5% ~ 95% (Non-condensing)

#### Dimension & Weight

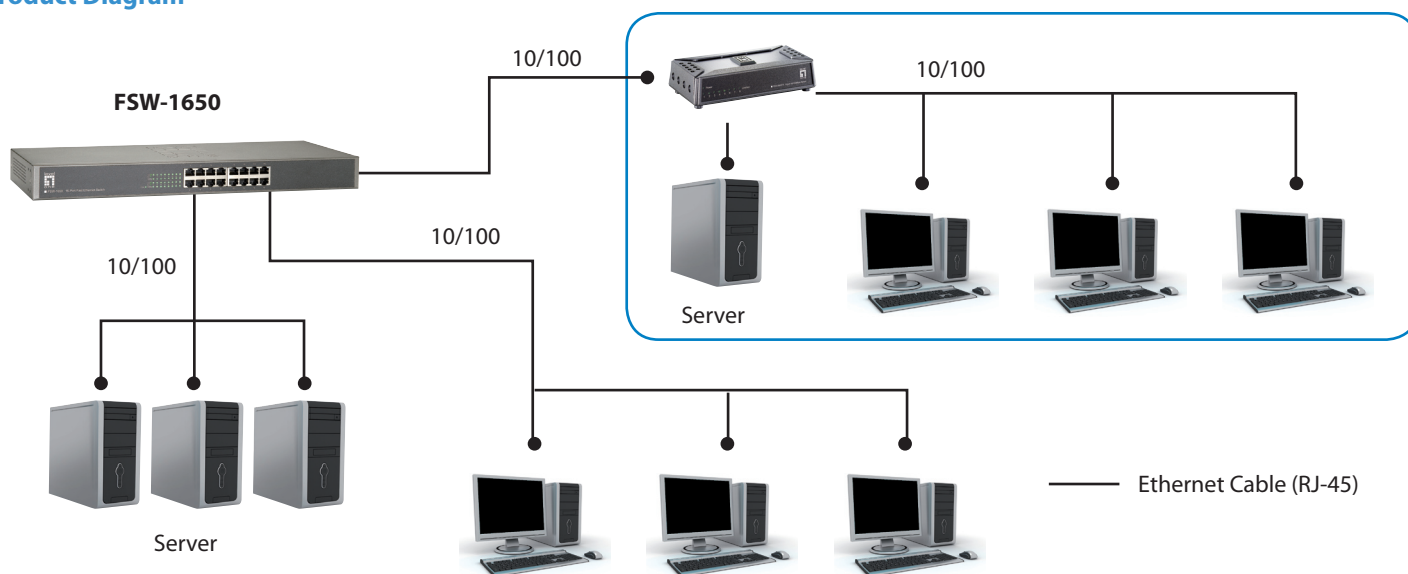
180mm (L) x 440mm (W) x 44mm (H)

2.05 kg

#### Certifications

CE  
 RoHS

## Product Diagram



## Order Information

**FSW-1650:** 16-Port 10/100 Rackmount Switch

## Package Contents

FSW-1650, Power Cord, Rack-mount Brackets, Quick Installation Guide