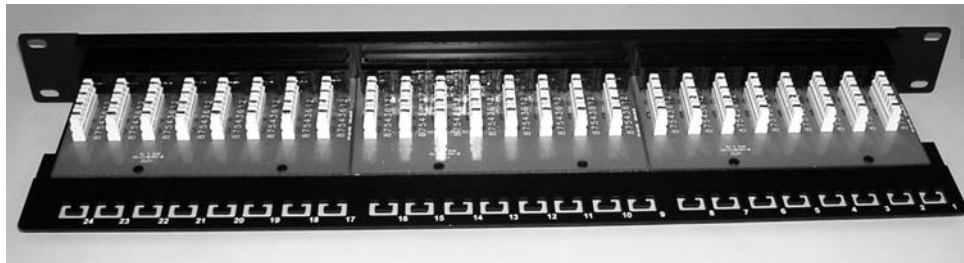
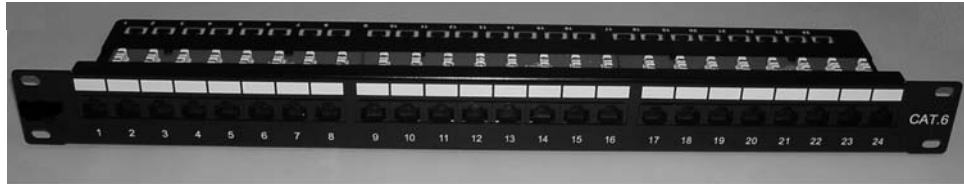
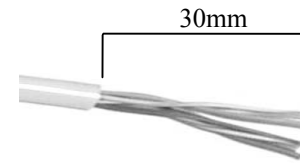


# Installing Instruction

1



3



Strip approximately 30mm of the cable jacket, and separate the wires into 4 pairs.

4

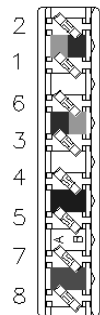


Follow the IDC color code for T568A or T568B wiring. Use the impact tool to punch and connect the wires on the IDC.

2

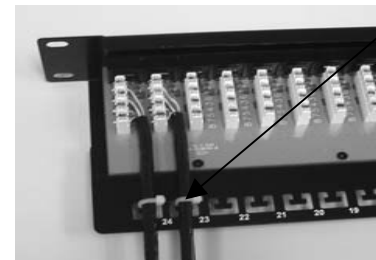
Color Coding Information

IDC(KRONE)



| T568A |              | T568B |              |
|-------|--------------|-------|--------------|
| Pin 5 | White/Blue   | Pin 5 | White/Blue   |
| Pin 4 | Blue         | Pin 4 | Blue         |
| Pin 1 | White/Green  | Pin 1 | White/Orange |
| Pin 2 | Green        | Pin 2 | Orange       |
| Pin 3 | White/Orange | Pin 3 | White/Green  |
| Pin 6 | Orange       | Pin 6 | Green        |
| Pin 7 | White/Brown  | Pin 7 | White/Brown  |
| Pin 8 | Brown        | Pin 8 | Brown        |

5



Cable tie

Use the Cable tie to manage these cables, then complete the installation.